

Grandforme Jingumae II #201

5 min. walk to Omotesando Stn. on Ginza-Line
10 min. walk to Harajuku Stn. on JR Yamanote-Line

《 BUILDING 》

A D D R E S S : 3-15-1, Jingumae, Shibuya-ku, Tokyo
S T R U C T U R E : Re-Inforced Concrete 3 Stories
F A C I L I T I E S : Air-Conditioner, System Kitchen, Washer/Dryer
Oven, Dishwasher, BS, Auto Lock System

COMPLETION : 1989/10

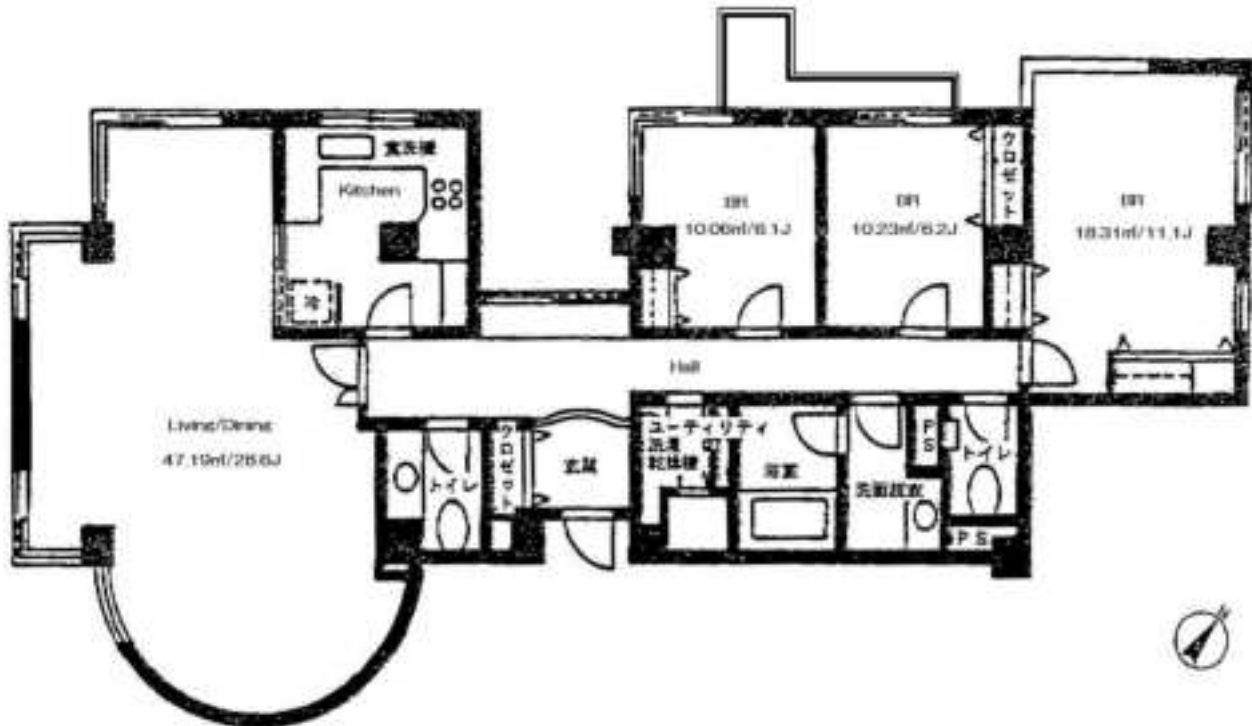
AVAILABLE : Now

《 TERMS 》

MONTHLY RENT : ￥600,000-
S I Z E : 142.98 m²
FLOOR PLAN : 3LDK
P A R K I N G : 1 Lot Included (Flat)
D E P O S I T : 2 Months
P E R I O D : 2 Years (Ordinary Lease)

《 REMARKS 》

Pets Negotiable / Business Office Negotiable
Carpet, 2-Toilet, 1-Bath (Japanese Style Bathroom)
Key Money : 1 Month / Renewal Fee : 1 Month



Copyright(c) 1998-2017 by HOKUO PLANNING CO.,LTD. All rights reserved. No.10010081-201
IN CASE THAT THE PRESENT CONDITION IS DIFFERENT FROM THE FLOOR PLAN;THE PRESENT CONDITION TAKES PRECEDENCE OVER IT.
BUY INSURANCE DESIGNATED BY LESSOR.

**HOKUO
PLANNING
CO.,LTD.**
INVESTMENT
REAL ESTATE AGENCY

HOKUO PLANNING CO.,LTD.

PHONE: 03-3405-8881

F A X : 03-3405-8851

E-MAIL: info@hokuo-p.com

3-8-5-2F MINAMI AOYAMA, MINATO-KU, TOKYO

東京都知事(9)第44267号 株式会社 北王プランニング 東京都港区南青山3丁目8番5号

取引態様 専任媒介

貸主	0%	借主	100%
元付	0%	客付	100%