

Atrium Nibancho #301

3 min. walk to Kojimachi Stn. on Tokyo Metro Yurakucho Line
6 min. walk to Yotsuya Stn. on JR / Metro Namboku / Metro Marunouchi Lines

《 BUILDING 》

A D D R E S S : 8-1, Nibancho, Chiyoda-ku, Tokyo

S T R U C T U R E : Reinforced Concrete 4 Stories

F A C I L I T I E S : Air-Conditioner, Hot Water Supply, Floor Heating, Refrigerator, Dishwasher
Gas Range, Oven, Disposer, Washer, Dryer, CS, Cable Radio
SECOM, Trunk Room, Flat Parking

C O M P L E T I O N : 2005/11

A V A I L A B L E : Mid. of September

《 TERMS 》

M O N T H L Y R E N T : ¥ 680,000-

S I Z E : 124.30 m²

F L O O R P L A N : 3LDK

P A R K I N G : 50,000 yen (Flat)

D E P O S I T : 2 Months

P E R I O D : 2 Years (Ordinary Lease)

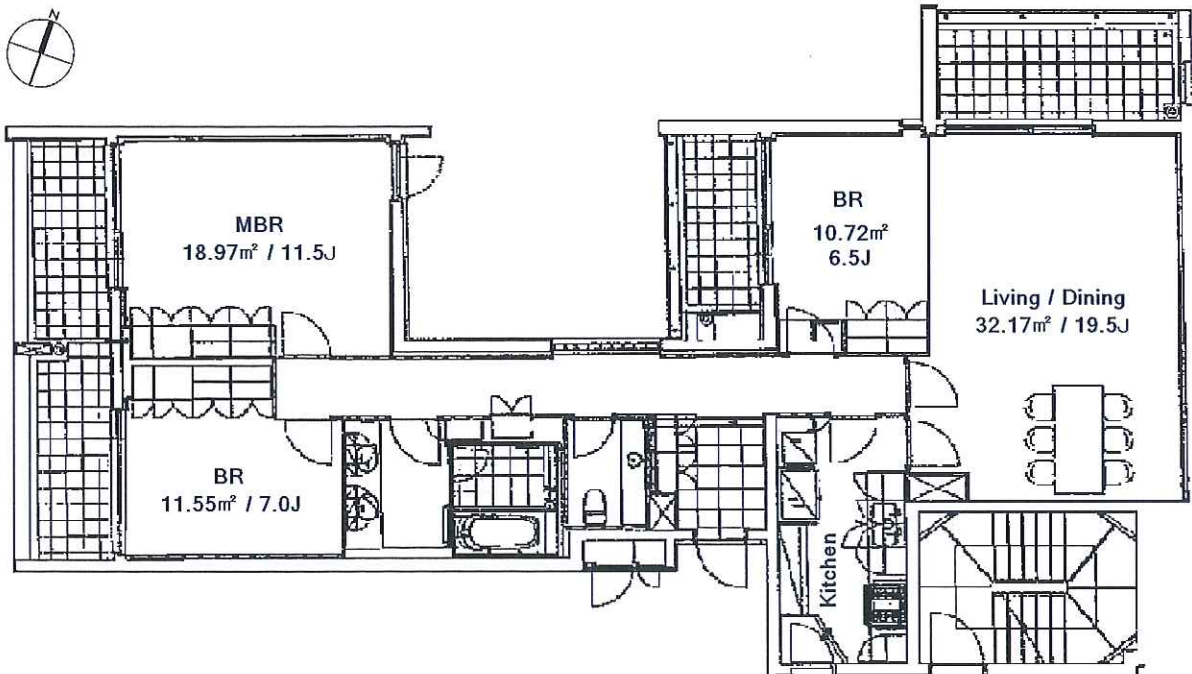


《 REMARKS 》

Pet Negotiable, Wooden floor, Trunk Room, Fitness Room

Designated moving company

Key Money : 1 month



Copyright(c) 1998-2016 by HOKUO PLANNING CO.,LTD. All rights reserved. No.15010306-301
IN CASE THAT THE PRESENT CONDITION IS DIFFERENT FROM THE FLOOR PLAN,THE PRESENT CONDITION TAKES PRECEDENCE OVER IT.
BUY INSURANCE DESIGNATED BY LESSOR.

HOKUO PLANNING CO.,LTD.

PHONE: 03-3405-8881

F A X : 03-3405-8851

E-MAIL: info@hokuo-p.com

3-8-5-2F MINAMI AOYAMA, MINATO-KU, TOKYO

東京都知事(9)第44267号 株式会社 北王プランニング 東京都港区南青山3丁目8番5号

取引態様 専任媒介

| | | | |
|----|----|----|------|
| 貸主 | 0% | 借主 | 100% |
| 元付 | 0% | 客付 | 100% |

HOKUO
PLANNING
CO.,LTD.
INVESTMENT
REAL ESTATE AGENCY