

Sanbancho Park Terrace Ouen #906

4 min walk to Hanzomon stn. on Hanzomon-line

4 min walk to Hanzomon stn. on JR Sobu/Yurakucho/Nanboku-line

7 min. walk to Kojimachi stn. on Yurakucho-line

《 BUILDING 》

A D D R E S S : 9-6 Sanbancho Chiyoda-ku, Tokyo

S T R U C T U R E : Reinforced Concrete 12 stories

F A C I L I T I E S : Hot water system, Air-conditioning, Floor-heating, Dishwasher,
Water purifier, Trunk room

C O M P L E T I O N : 2005/ 8

A V A I L A B L E : Beg of Aug

《 TERMS 》

M O N T H L Y R E N T : ¥ 950,000-

S I Z E : 151.20 m²

F L O O R P L A N : 3LDK

P A R K I N G : Additional

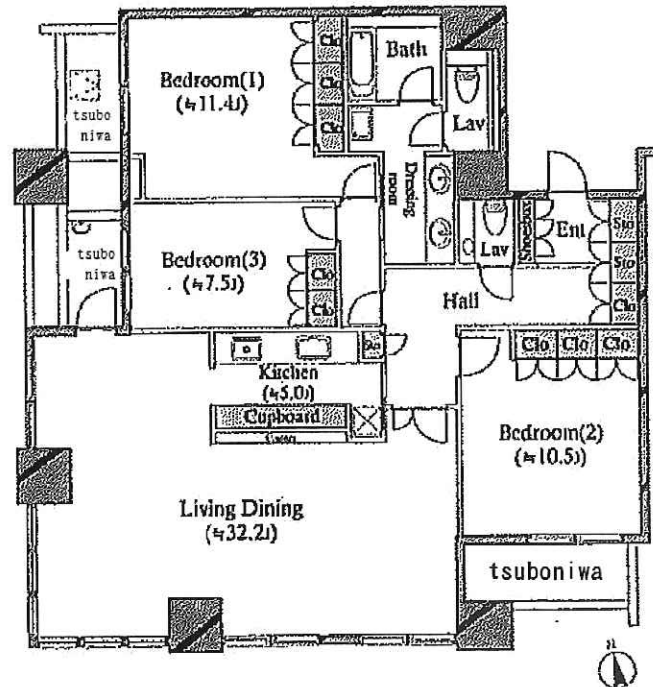
D E P O S I T : 2 Months

P E R I O D : 2 Years (Ordinary Lease)

《 REMARKS 》

Key money:1 month, Renewal fee : 1 month

Wooden floor



Copyright(c) 1998-2017 by HOKUO PLANNING CO.,LTD. All rights reserved.

No.10010068-906

IN CASE THAT THE PRESENT CONDITION IS DIFFERENT FROM THE FLOOR PLAN;THE PRESENT CONDITION TAKES PRECEDENCE OVER IT.

BUY INSURANCE DESIGNATED BY LESSOR.

**HOKUO
PLANNING
CO.,LTD.**
INVESTMENT
REAL ESTATE AGENCY

HOKUO PLANNING CO.,LTD.

PHONE: 03-3405-8881

F A X : 03-3405-8851

E-MAIL: info@hokuo-p.com

3-8-5-2F MINAMI AOYAMA, MINATO-KU, TOKYO

東京都知事(9)第44267号 株式会社 北王プランニング 東京都港区南青山3丁目8番5号

取引態様 一般媒介

貸主	0%	借主	100%
元付	0%	客付	100%